

How to Install QuickJacks

Adjustable Base System for Hard Surfaces

- 1 Make your timber frame to suit your building
- 2 Attach the brackets to the underside of the frame

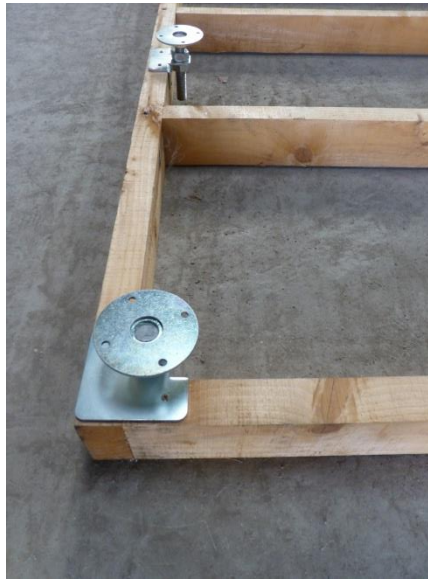


Inline Bracket



Corner Bracket

- 3 Attach the adjusters



- 4 Flip the frame over
- 5 Adjust the lower nut to level
- 6 Tighten the upper locking nut and bolt to ground if required

Super Strong:

8 ft x 5 ft timber frame
made with 4" x 2" timbers
on concrete with 8 QuickJacks
(4 corners and 4 inline brackets)
Loaded with 1500kgs of concrete

